



Australian Government
National Capital Authority

Job No: 18643 File: 12/885 TRIM: 146690

Mr Angus Gemmell
Level 57
MLC Centre
Martin Place
SYDNEY NSW 2000

Dear Mr Gemmell

Blocks 707 and 708 Majura – Construction of solar farm

I refer to the above works approval application submitted by Solar Fields to the National Capital Authority (NCA) for consideration on 23 October 2012. I also refer to further information submitted on 11 June 2013 and 12 July 2013.

The NCA advises that:

Works Approval is granted pursuant to Section 12(1)(b) of the *Australian Capital Territory (Planning and Land Management) Act 1988* for the installation of a 4MW solar photovoltaic facility (solar farm) as shown in the drawings numbered VP0019-01, Sheets 1 and 2, Landscape Plan 269-S1–Overview, 269-S1–Landscape detail south, 269-S3 – Landscape detail centre, 269-S4 Landscape detail and the supporting documentation submitted.

The term "works" is defined in the Act to exclude anything done inside buildings or structures. Under the Act works approval may be given where the works are in accordance with the National Capital Plan. This works approval is given only on the basis of satisfaction that the works are in accordance with the National Capital Plan and does not constitute building approval. It does not constitute any form of warranty as to the structural sufficiency of the proposed works, as to safety of the works or as to safety of the performance of the works. It is the responsibility of the applicant to ensure the safety of the works and the safety of the performance of the works and to ensure that any approvals required under separate legislation are also obtained.

Please note the following requirements:

1. This approval is conditional on:

- the resultant level of after image glare from the solar farm not exceeding 'low potential' as measured by the Sandia Laboratories tool;
- the proponent is to provide a report on the above to the NCA on completion of construction and as required by CASA and the NCA; and
- if, at any point in the future, the solar farm presents an aviation hazard the owners must mitigate this hazard to the satisfaction of CASA and the NCA.

2. A separate works approval application must be submitted to the NCA for approval prior to construction commencing. This works approval application must include the following information:

Building the National Capital in the hearts of all Australians

T 02 6271 2888 | F 02 6273 4427 | www.nationalcapital.gov.au | email natcap@natcap.gov.au


Couriers & deliveries: Treasury Building, Newlands Street, Parkes ACT 2600 | Mailing: GPO Box 373 Canberra ACT 2601

ABN 75 149 374 427

- Final layout, configuration and design of the solar arrays and details of ancillary infrastructure including car parking, site office, amenities, inverter kiosk sheds, transformers, signage, confirmation of method of grid connection (underground or overhead 11kV cabling) and details of trenching and remediation.
 - A detailed landscape plan providing details of screen planting, species, heights, fencing, compatibility with wildlife connectivity and the Majura Parkway landscaping scheme, method of ongoing landscaping maintenance and planting.
 - Details of ground mounted trackers including height, technology (tracking or fixed), method of construction (footing depths and widths).
 - Access road details and evidence of consultation with ACT Roads regarding the access road and construction timing.
 - Site Construction Management Plan (detailing location of construction site compound and equipment storage, soil and erosion control measures, construction vehicle storage and parking, construction time frame, details of infrastructure delivery to the site and storage).
 - Details of maintenance and cleaning regimes for the solar panels.
3. Final ACTEW approval for connection to the grid is to be obtained and submitted to the NCA prior to construction commencing,
4. A cultural heritage study is to be undertaken and submitted with the detailed design works approval application.

Should you have any query or need further advice on the matter please do not hesitate to contact Edwina Nelson on (02) 6271 2871.

Yours sincerely



Natalie Broughton
Director Development Assessment and Heritage

25 November 2013

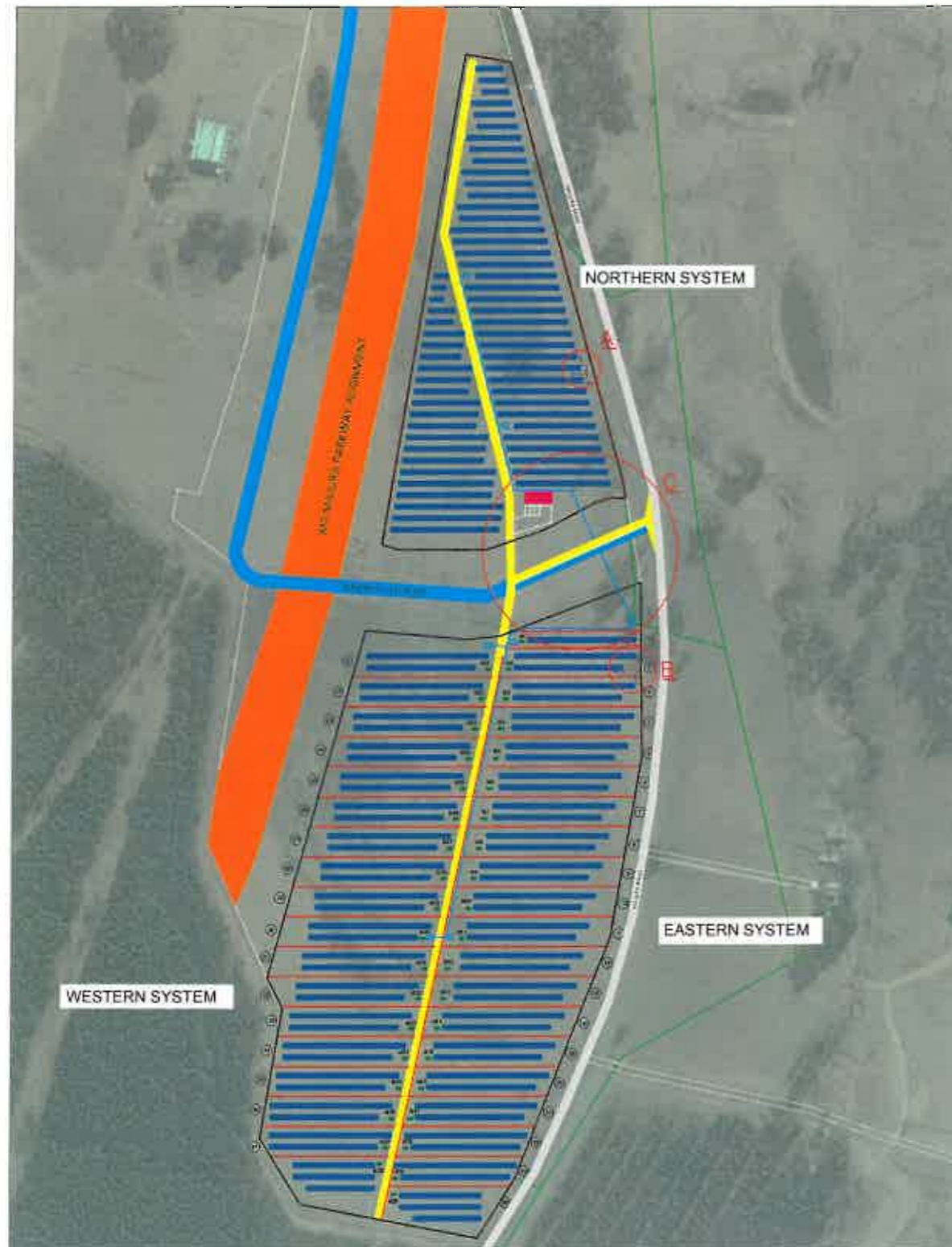
Building the National Capital in the hearts of all Australians

T 02 6271 2888 | F 02 6273 4427 | www.nationalcapital.gov.au | email natcap@natcap.gov.au

Couriers & deliveries: Treasury Building, Newlands Street, Parkes ACT 2600 | Mailing: GPO Box 373 Canberra ACT 2601

ABN 75 149 374 427

OVERALL PROPOSED SITE LAYOUT - PLAN VIEW

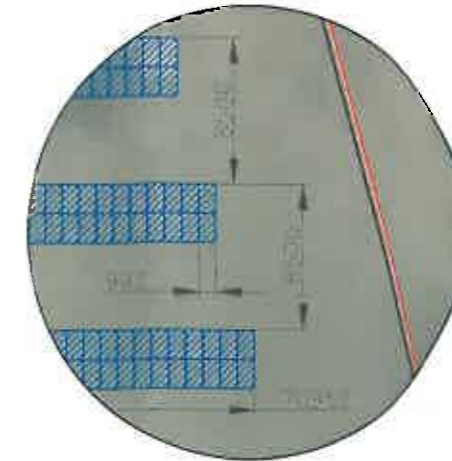


NORTHERN SYSTEM DETAILS:

PV MODULES: 290Wp POLY
INVERTER:SMA STP SERIES

NUMBER OF MODULES: 6380
SYSTEM kWp: 1,850.2

DETAIL A

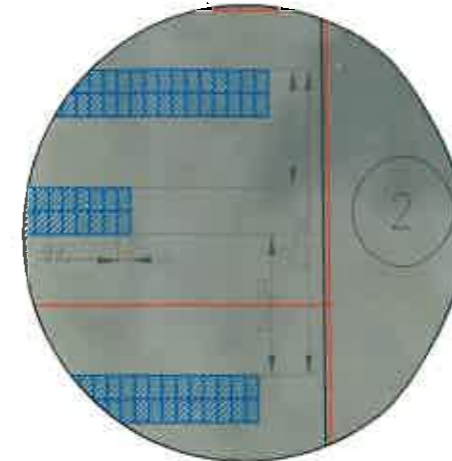


EASTERN SYSTEM DETAILS:

PV MODULES: 290Wp POLY
INVERTER:SMA STP SERIES

NUMBER OF MODULES: 19 x 340 + 1 x 160
SYSTEM kWp: 19 x 98.6 + 1 x 46.4

DETAIL B



NATIONAL CAPITAL AUTHORITY
APPROVAL OF WORKS
I, NATALIE BROUGHTON, approve the works in this document pursuant to Section 12 (1) (b) of the Australian Capital Territory (Planning and Land Management) Act 1988

N. Broughton 25/11/13
(NCA Delegate) (Date)



WESTERN SYSTEM DETAILS:

PV MODULES: 290Wp POLY
INVERTER:SMA STP SERIES

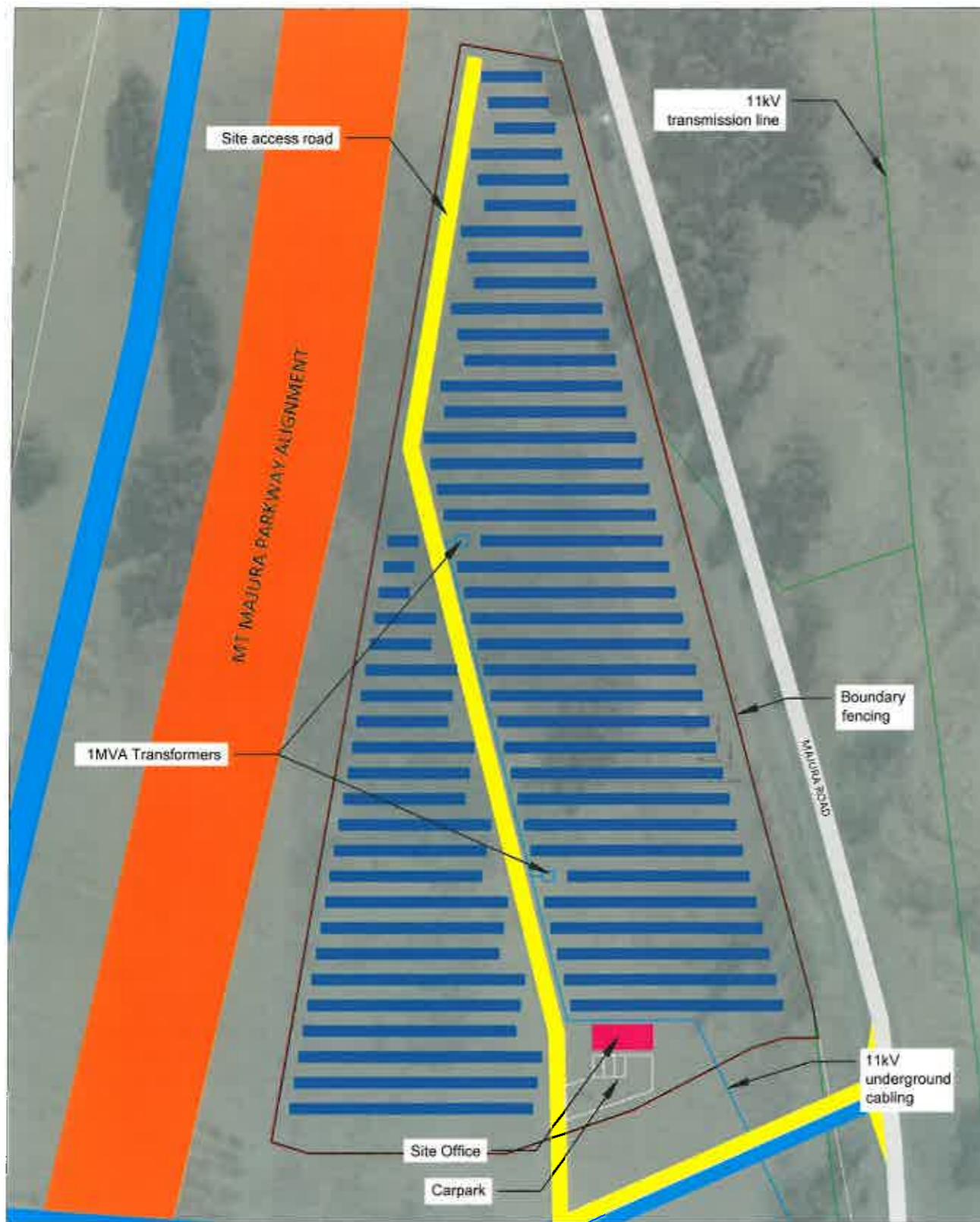
NUMBER OF MODULES: 18 x 340
SYSTEM kWp: 18 x 98.6

DETAIL C

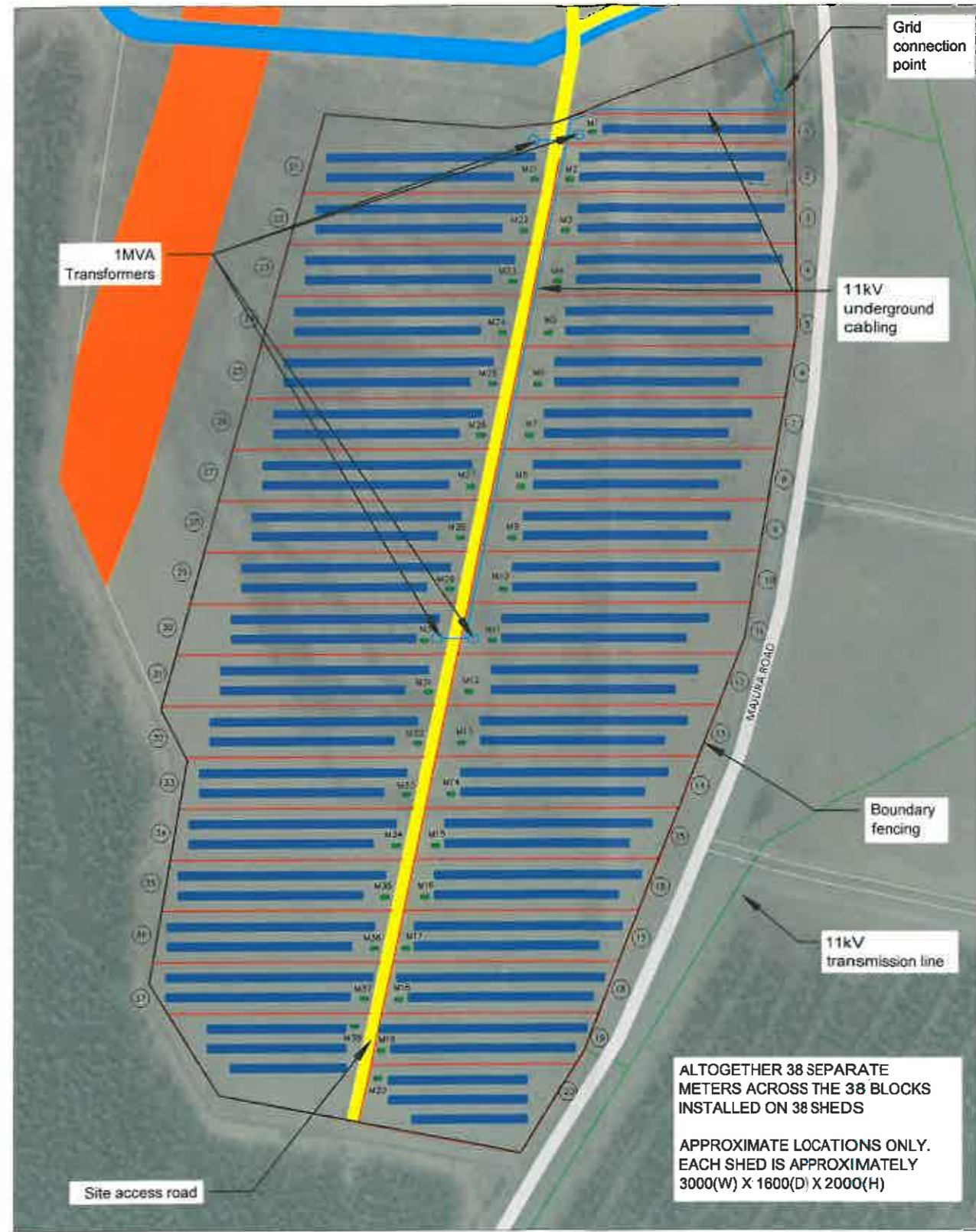


SOLAR ENGINEER:  VIBRANT ENERGY SOLUTIONS	THIS DRAWING IS PROPERTY OF VIBRANT ENERGY SOLUTIONS PTY LTD AND MAY NOT BE COPIED (IN WHOLE OR IN PART) USED FOR MANUFACTURE OR DISCLOSED WITHOUT PRIOR CONSENT OF VIBRANT ENERGY SOLUTIONS PTY LTD.	DEVELOPER:	CONTRACTOR:	TECHNOLOGY:	VES PROJECT NUMBER: VP0019	PROJECT TITLE MAJURA SOLAR FARM	DRAWN JB	CHKD.	CHKD.	APPR.	1 OF 2
					STATUS: PRELIMINARY	PROJECT LOCATION AUSTRALIAN CAPITAL TERRITORY	DATE 04-02-13	DATE	DATE	DATE	REV. D
					TRUE NORTH: 	SCALE: NTS	DRAWING TITLE SITE LAYOUT	CAD FILE VP0019-01-D.DWG	SHEET SIZE A3		
							DWG No. VP0019-01				


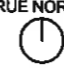
NORTHERN SYSTEM DETAIL

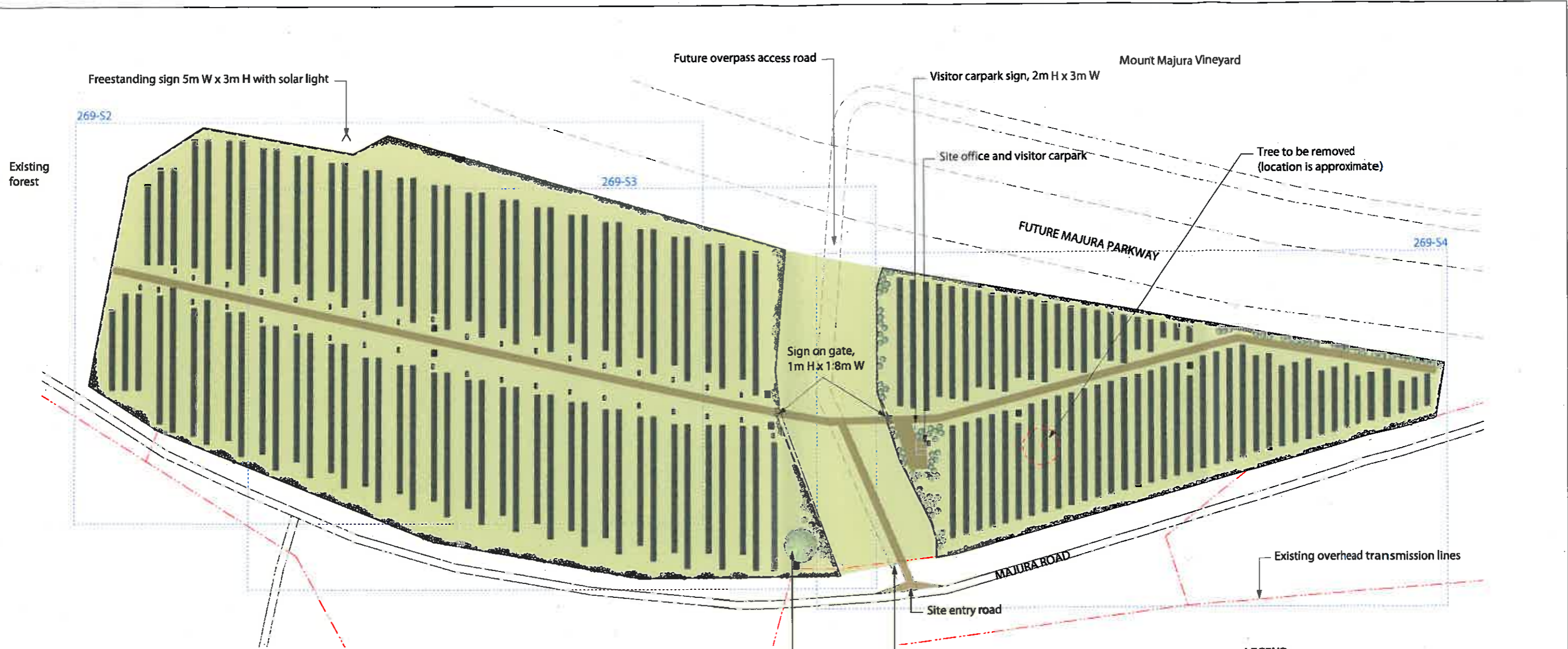


EASTERN AND WESTERN SYSTEM DETAIL



ALTOGETHER 38 SEPARATE METERS ACROSS THE 38 BLOCKS INSTALLED ON 38 SHEDS
 APPROXIMATE LOCATIONS ONLY. EACH SHED IS APPROXIMATELY 3000(W) X 1600(D) X 2000(H)

SOLAR ENGINEER:  VIBRANT ENERGY SOLUTIONS	THIS DRAWING IS PROPERTY OF VIBRANT ENERGY SOLUTIONS PTY LTD AND MAY NOT BE COPIED (IN WHOLE OR IN PART) USED FOR MANUFACTURE OR DISCLOSED WITHOUT PRIOR CONSENT OF VIBRANT ENERGY SOLUTIONS PTY LTD.	DEVELOPER: NATIONAL AUTHORITY APPROVAL OF WORKS I, NATALIE BROUGHTON, approve the works in this document pursuant to Section 12 (1) (b) of the Australian Capital Territory (Planning and Land Management) Act 1988 <i>N Broughton</i> 25/11/13 (NCA Delegate) (Date)	CONTRACTOR: AUTHORITY TECHNOLOGY: VES PROJECT NUMBER: VP0019 STATUS: PRELIMINARY TRUE NORTH:  SCALE: NTS	PROJECT TITLE: MAJURA SOLAR FARM PROJECT LOCATION: AUSTRALIAN CAPITAL TERRITORY DRAWING TITLE: SITE LAYOUT	DRAWN: JB DATE: 04-02-13 CAD FILE: VP0019-01-D.DWG DWG No. VP0019-01	CHKD.: DATE:	CHKD.: DATE:	APPR.: DATE:	2 OF 2 REV. D SHEET SIZE A3



INDICATIVE PLANT SPECIES

Scientific Name	Size (m)	Comment
Shrubs and climbers		
<i>Acacia buxifolia</i>	1.2 x 1.2	Hardy, local species
<i>Leptospermum rotundifolium</i>	2 x 1.5	Hardy, rapid growth
<i>Grevillea victoriae broad leaf</i>	2 x 2	Hardy, bird attracting
<i>Olearia phlogopappa 'Monaro'</i>	1 x 1	Hardy, local species
<i>Eustrephus latifolius</i>	climber	Edible fruit, requires tying
<i>Rubus parvifolius</i>	climber	Hardy local species with edible fruit
Trees		
<i>Eucalyptus gregsoniana</i>	5 x 4	Hardy mallee
<i>Eucalyptus moorei</i>	5 x 3	Hardy small tree
<i>Callistemon viminalis</i>	6 x 3	Weeping tree, remove lower branches
<i>Acacia covenyi</i>	5 x 5	Long lived wattle, remove lower branches

Shrubs and climbers to be planted within 0.5m of boundary fences to allow plants to grow through fences. Plants to be arranged in closely planted, mixed species groups with gaps between groups to create informal appearance. Shrubs and climbers planted at 2m centres within their groups. Climbers to be planted along fence. Trees to be arranged in informal arrangement as shown at approximately 7m centres.

NATIONAL CAPITAL AUTHORITY
APPROVAL OF WORKS
 I, NATALIE BROUGHTON, approve the works in this document pursuant to Section 12 (1) (b) of the Australian Capital Territory (Planning and Land Management) Act 1988
N. Broughton 25/11/13
 (NCA Delegate) (Date)

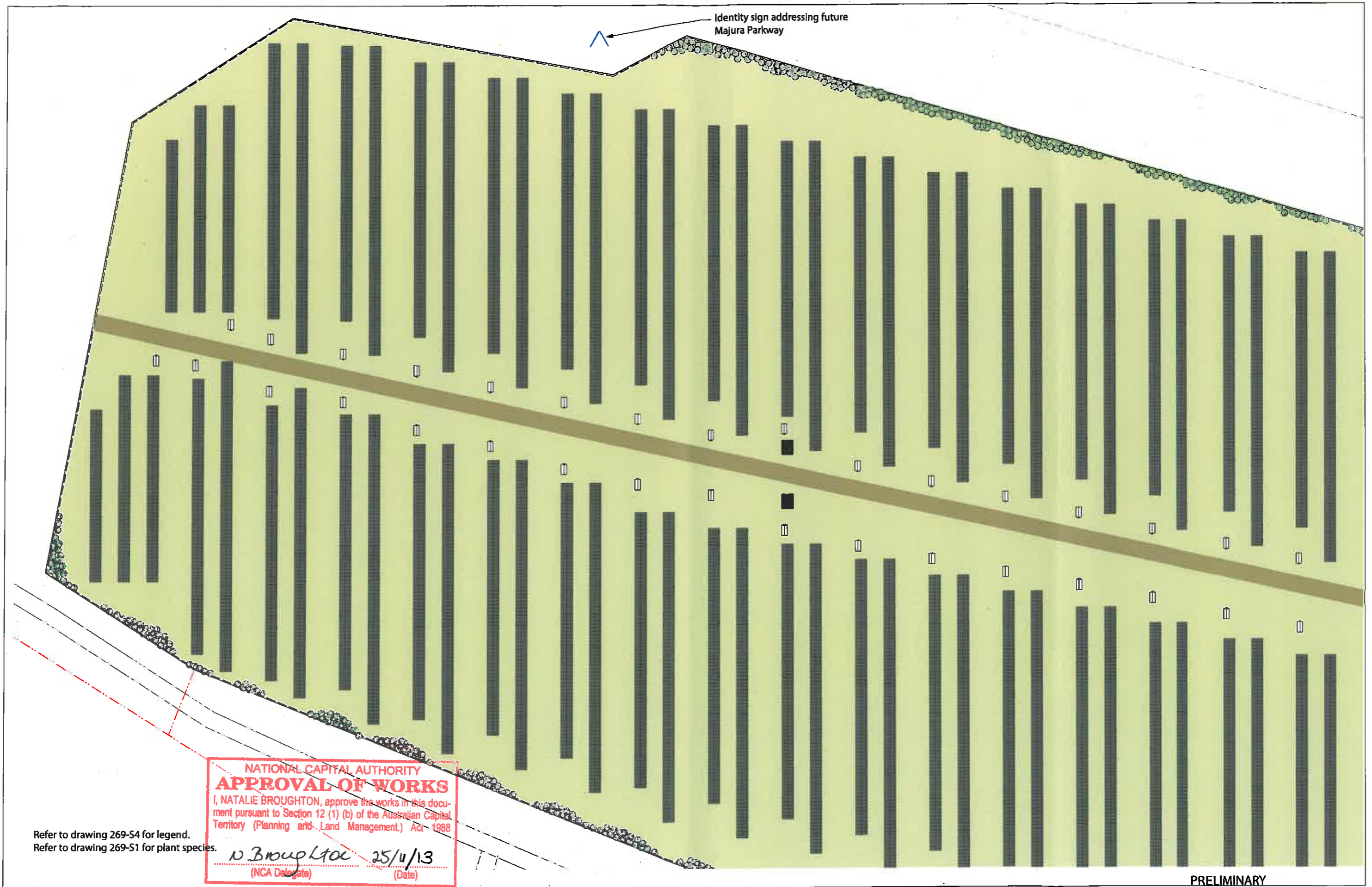
- LEGEND**
- Dust stabilised gravel road
 - Mown grass
 - Shrubs/climbers proposed (refer to notes for species)
 - Trees proposed (refer to notes for species)
 - Sign
 - Photovoltaic array
 - Transformer
 - Meter shed
 - Fence, 1.8m high mesh panels painted black
 - Overhead transmission line

PRELIMINARY
 Drawing
 Landscape plan - overview
 Project
 Majura Solar Farm
 314 Majura Road, Majura ACT
 Dwg no. Design Date Version
 269-S1 JC 5/2/13 B



Fresh Landscape Design
 Landscape Architects
 ph (02) 6112 8617
 office 13 Gibraltar St Bungendore NSW 2621
 web www.freshlandscape.com.au



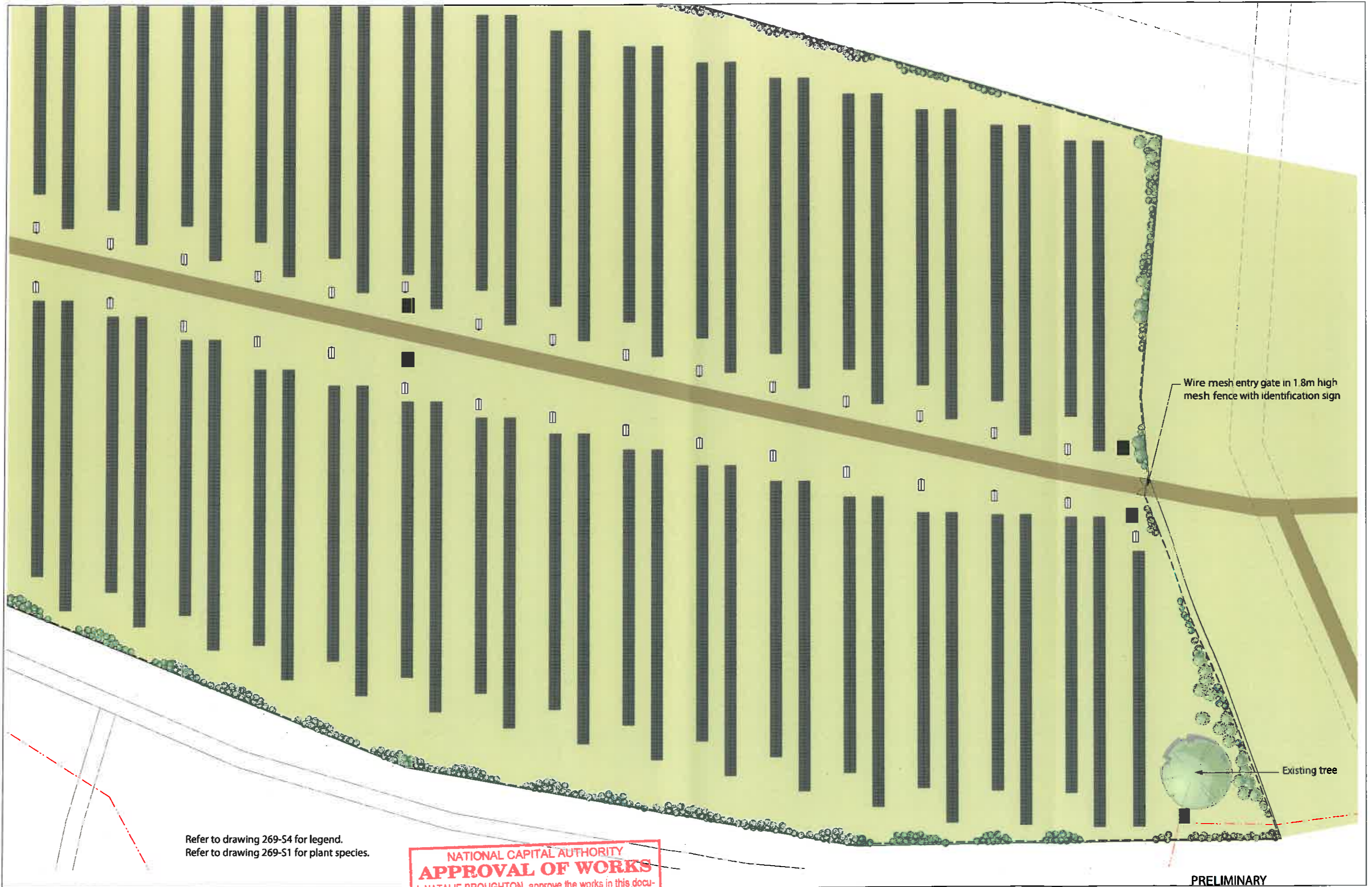


PRELIMINARY
 Drawing
 Landscape plan detail - south
 Project
 Majura Solar Farm
 314 Majura Road, Majura ACT
 Dwg no. Design Date Version
 269-S1 JC 5/2/13 B

FRESH
 landscape design

Fresh Landscape Design
 Landscape Architects
 ph (02) 6112 8617
 office 13 Gibraltar St Bungendore NSW 2621
 web www.freshlandscape.com.au


 Scale
 1:1000



Wire mesh entry gate in 1.8m high mesh fence with identification sign

Existing tree

Refer to drawing 269-S4 for legend.
Refer to drawing 269-S1 for plant species.

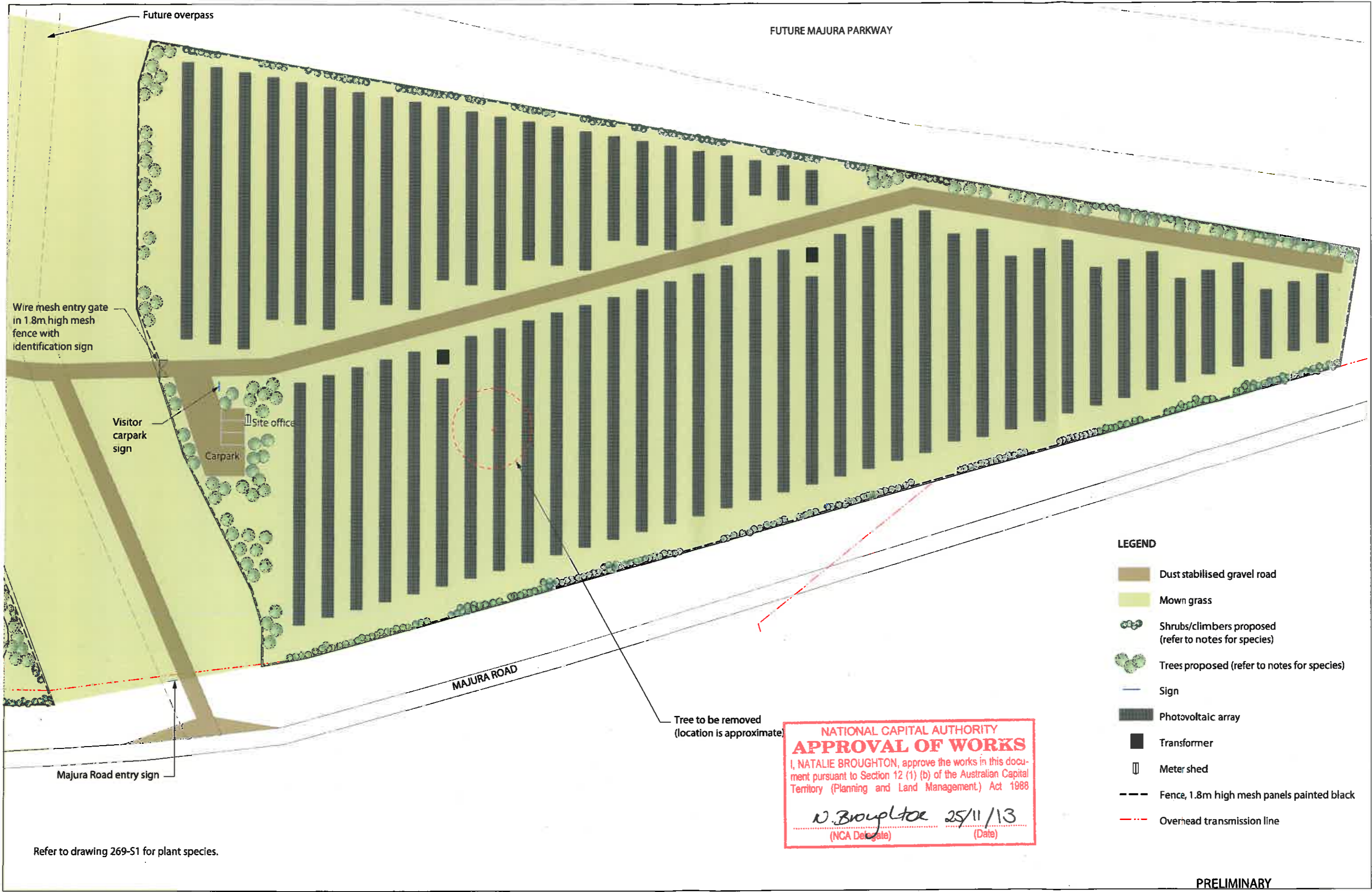
NATIONAL CAPITAL AUTHORITY
APPROVAL OF WORKS
I, NATALIE BROUGHTON, approve the works in this document pursuant to Section 12 (1) (b) of the Australian Capital Territory (Planning and Land Management) Act 1988
N. Broughton 25/11/13
(NCA Delegate) (Date)

Scale
1:1000

PRELIMINARY
Drawing
Landscape plan detail - centre
Project
Majura Solar Farm
314 Majura Road, Majura ACT
Dwg no. Design Date Version
269-S3 JC 5/2/13 B

FRESH
landscape design

Fresh Landscape Design
Landscape Architects
ph (02) 6112 8617
office 13 Gibraltar St Bungendore NSW 2621
web www.freshlandscape.com.au



Wire mesh entry gate in 1.8m high mesh fence with identification sign

Visitor carpark sign

Site office
Carpark

MAJURA ROAD

FUTURE MAJURA PARKWAY

Tree to be removed (location is approximate)

NATIONAL CAPITAL AUTHORITY
APPROVAL OF WORKS
 I, NATALIE BROUGHTON, approve the works in this document pursuant to Section 12 (1) (b) of the Australian Capital Territory (Planning and Land Management) Act 1988
N. Broughton 25/11/13
 (NCA Delegate) (Date)

LEGEND

- Dust stabilised gravel road
- Mown grass
- Shrubs/climbers proposed (refer to notes for species)
- Trees proposed (refer to notes for species)
- Sign
- Photovoltaic array
- Transformer
- Meter shed
- Fence, 1.8m high mesh panels painted black
- Overhead transmission line

Refer to drawing 269-S1 for plant species.



Fresh Landscape Design
Landscape Architects
ph (02) 6112 8617
office 13 Gibraltar St Bungendore NSW 2621
web www.freshlandscape.com.au



PRELIMINARY
 Drawing
 Landscape plan detail - north
 Project
 Majura Solar Farm
 314 Majura Road, Majura ACT
 Dwg no. Design Date Version
 269-S4 JC 5/2/13 B